



green earth
live in green
Green Earth Developers
Zaheerabad



ROYAL OAK
ESTATES



LP. No. 285/2022/H

Rate Card



P01100005959

SCHEME - A (18 MONTHS)

200 S.yards @ Rs.11,100/- per s.yard	Rs. 22,20,000/-
Allotment amount (15%) (-)	Rs. 3,33,000/-
Balance in 18 EMI (104833.3x18)	Rs. 18,87,000/-

SCHEME- B (12 MONTHS)

200 S.Yards @ Rs. 9600/- per s.yard	Rs.19,20,000/-
Initial Payment (20%) (-)	Rs. 3,84,000/-
Balance in 12 EMI (128000x12)	Rs.15,36,000/-

SCHEME - C (3 MONTHS)

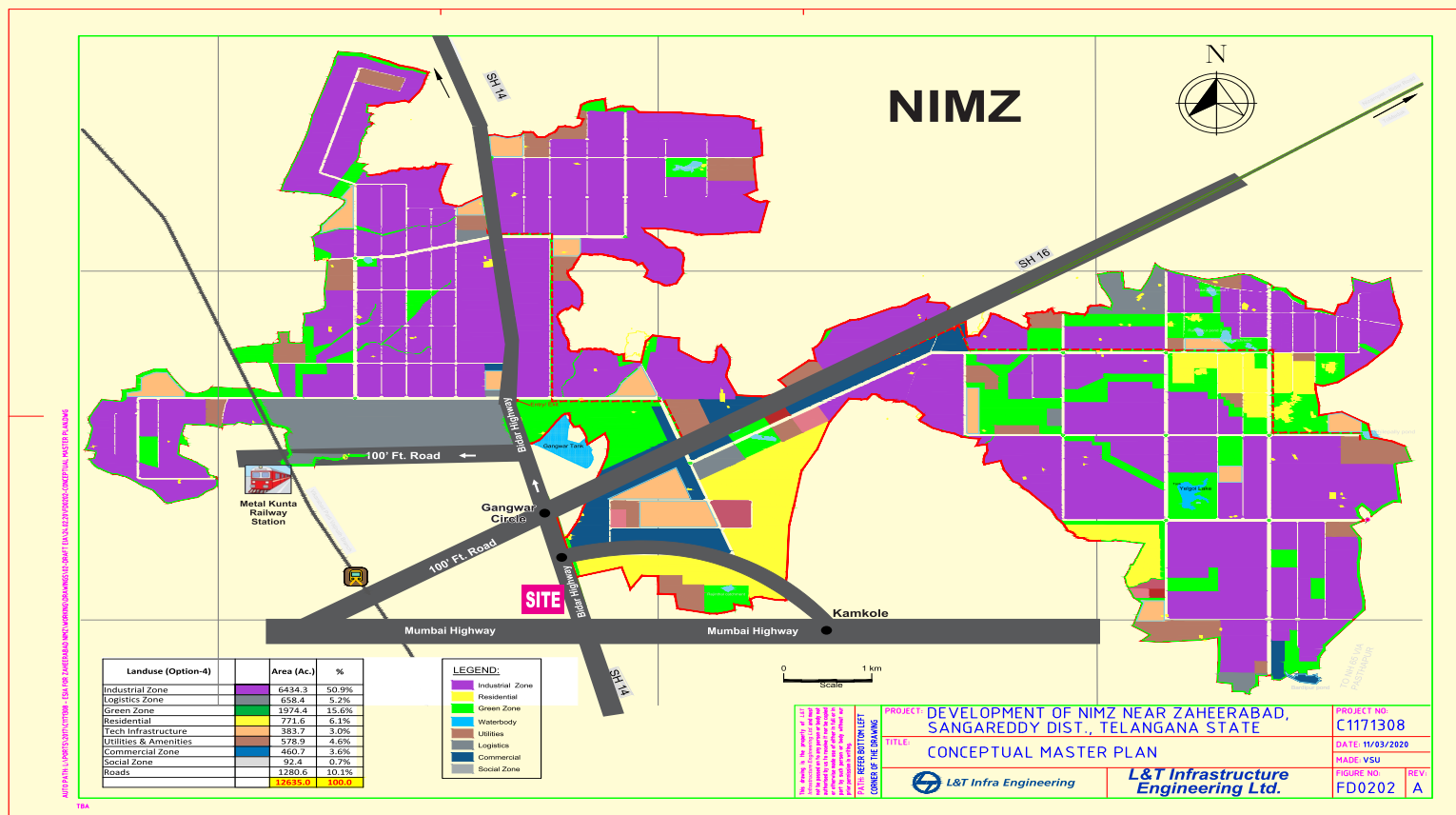
200 S.yards @ Rs.9000/- per s.yard	Rs. 18,00,000/-
Initial Payment (25%) (-)	Rs. 4,50,000/-
Balance in 3 EMI (4,50,000x3)	Rs. 13,50,000/-

COMMERCIAL PLOTS ONLY OUTRIGHT SCHEME

Commercial Plots @ Rs.15,000/- per square yard.
Plot Nos.1 to 7 and 15 To 22 are Commercial plots of different sizes.

Note:

1. Total Plot cost will increase or decrease as per Plot Size/Plot Area.
2. Plot Nos.1 to 7 AND 15 TO 22 are Commercial Plots.
3. All the 40' Corner plots are in Outright Scheme only.
4. All 40' Corner plots will be charged Rs.100/- per sq. yds extra.
5. North-East Corner Plots will be charged Rs. 150/- Extra.
6. Application Fee will be Rs. 500/-
7. Cheques should be collected on the name of Mairaj Properties Pvt. Ltd.



SURROUNDING DEVELOPMENTS



Triton Ev Team Visits Nimz Zaheerabad Site For Upcoming Rs 2,100-crore Unit



Woxsen School of Business



Mahindra Tractor Unit



Nimz Project



Mungi Company



Villas



Green Earth Developers



Contact:

3-2-189/47/A/1, Plot No 21,22 Zee Colony,
Near Milan Hotel, Main Road, Zaheerabad,
Sangareddy Dist, Telangana, India 502220

Website : www.greenearthdevelopers.in